

## OUR NEW ROOMS IN MIRANDA ARE NOW OPEN

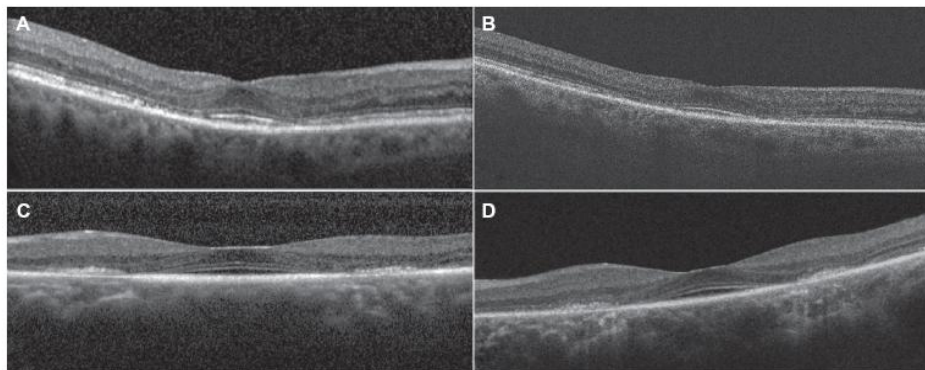
Dr Alan Flax, Dr Evan Soicher, Dr Robert Chong and Dr Harry Leung

offer consulting sessions in Miranda.

### PLAQUENIL SCREENING – THE ROLE OF SPECTRAL DOMAIN OCT

Dr Robert Chong

Spectral domain OCT (SD-OCT) is a useful tool in assessing patients for Hydroxychloroquine (Plaquenil) retinal toxicity. The part of the macula (central retina) that is affected first appears to be the photoreceptor layer. There are reports of loss of the junction of the inner and outer segments (IS/OS) which is the outer part of the photoreceptors. This outer part appears as a line of high reflectivity (bright white line) above the RPE line on the OCT. Loss of the IS/OS line is initially peri-foveal, giving the appearance of a "Bull's eye". Later in the disease the fovea can be involved. With the latest acquisition of a SD-OCT (Cirrus-Zeiss) in our Kogarah rooms, we at Southern Ophthalmology will be using the OCT as an additional screening tool for your Plaquenil patients.



These images are obtained from this journal article: [Chen E, Brown DM, Benz MS, Fish RH, Wong TP, Kim RY, Major JC](#). Spectral domain optical coherence tomography as an effective screening test for hydroxychloroquine retinopathy (the "flying saucer" sign). *Clin Ophthalmol*. 2010 Oct 21;4:1151-8.

### OPTIMISING REFRACTIVE OUTCOMES IN CATARACT SURGERY

Dr Evan Soicher

Achieving the desired refractive outcome following cataract surgery is vital to ensure happy patients. It is important to choose the most suitable model of intra ocular lenses (IOL) as well as the correct power to achieve the desired outcome.

Calculating the IOL power depends on accurate pre operative measurements, use of the best formula and continuous auditing of refractive results.

Earlier IOL formulae are based on the axial length of the eye and corneal curvature. They did not take into account the effective lens position and individual characteristic of each IOL model. 2 patients with same axial length and corneal curvature could have vastly different refractive outcomes due to the variable position of the IOL in the eye. In addition the same brand of IOL may sit differently in the eye at higher and lower powers.

To overcome these issues newer formulae use a number of factors (constants). These include the pre operative anterior chamber depth, corneal diameter, cataract thickness and individual characteristic of each IOL.

The newer generation formulae which we use are the Holladay 2 and Haigis. Both formulae constants are continually upgraded to improve their accuracy in predicting refractive outcomes. By auditing post operative refractive results and feeding the data back into the formulae data bases the formulae can be individualized for each surgeon. Southern Ophthalmology uses the Holladay IOL Consultant and Surgical Outcomes Assessment Program to audit our results, fine tune our IOL calculations and improve our refractive outcomes

## Our New Miranda Rooms



### We offer state of the art comprehensive ophthalmic services in Miranda including:

- Intravitreal Lucentis and Avastin injections for Macular Degeneration and other retinal conditions
- Argon Laser for treatment of diabetic retinopathy
- Selective Laser Trabeculoplasty (SLT) laser treatment for glaucoma
- YAG laser for angle closure (Iridotomy) and for posterior capsular opacity (Capsulotomy) following cataract surgery
- Zeiss Stratus OCT for macula and optic nerve head imaging
- Botulinum Toxin (Botox) injections for strabismus
- Paediatric Consultations
- Minor eyelid procedures

## Our Doctors



**Dr Alan Flax**

Cataract Surgery  
Glaucoma  
Diabetic Eye Disease



**Dr Robert Chong**

(speaks fluent Cantonese and Mandarin)

張俊傑醫生

Medical Retina  
Macular Degeneration  
Diabetic Eye Disease  
能操流利廣東話和普通話



**Dr Evan Soicher**

Cataract Surgery  
Glaucoma  
Diabetic Eye Disease



**Dr Harry Leung**

(speaks fluent Cantonese and Mandarin)

梁維健醫生

Paediatric Ophthalmology  
Strabismus  
Cataract Surgery  
能操流利廣東話和普通話

## Southern Ophthalmology

[www.suresight.com.au](http://www.suresight.com.au)

**KOGARAH** Suite 2A, Level 2, 4 Belgrave Street, Kogarah 2217 Tel: (02) 9587 8585 Fax (02) 9587 8279

**MIRANDA** Suite 1, Grnd Flr, 26-28 Gibbs St, Miranda 2228 Tel: (02) 9524 1449 Fax (02) 9524 1083

**WOLLONGONG** 441 Crown St, Wollongong 2500 Tel: (02) 4229 9772 Fax: (02) 4229 4773

